

# Precise, robust forklift truck weighing system LW

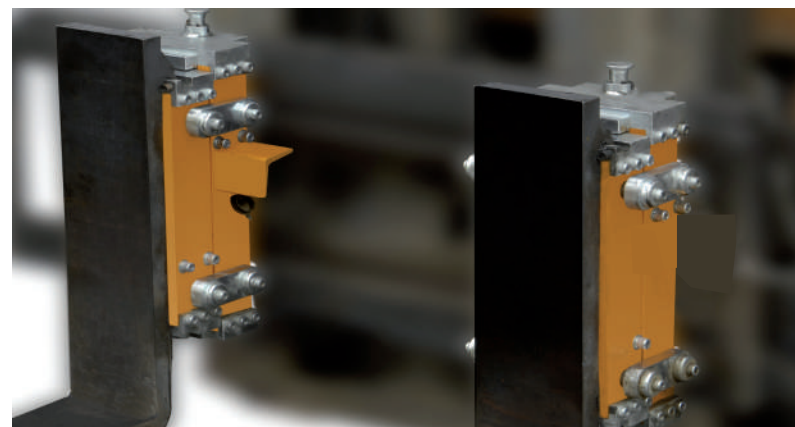
## MAIN FEATURES

- Capacities 2.5 and 4 t
- Very easy installation
- High resistance to shock and side loads
- Range of weight indicators and printers



SPECIFICATION				
Model	Max cap kg	Readability kg	Carriage Bar Spacing mm	Carriage Class
WT25	1500 / 2500	1 / 2	407	(16") II
WT45	2500 / 4000	2 / 5	508	(20") III

## APPLICATIONS



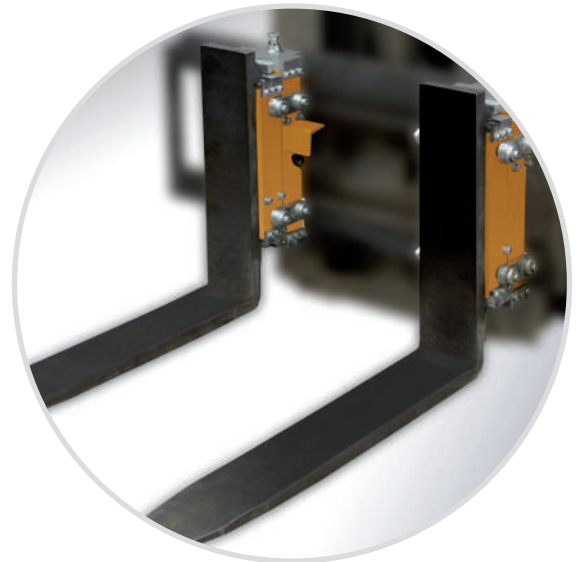
# Precise, robust forklift truck weighing system LW

Weighing plays a vital role in warehouse logistics, from both commercial and safety standpoints. Having the ability to weigh pallets, drums and IBCs directly from the forklift has significant time and operational advantages. However any retrofit weighing system must be simple to fit and has to withstand one of the harshest industrial environments imaginable.

LiftWeigh has been specifically developed to meet all essential criteria for retrofit forklift truck weighing systems. The LiftWeigh system consists of two weigh assemblies, which fit side by side directly on standard forklift carriages - without the need for any mechanical alterations to the forklift itself whatsoever. The forks then simply hook onto the weighing units. Robust, fully protected cable assemblies are connected via a junction box to the onboard weight indicator.

LiftWeigh offers:

- Capacities 2.5, 4.0 t
- Maximum fork length 1.3 m
- Very easy installation
- High resistance to shock and side loads
- Reduced risk of overloading/tipping
- Compatible with Class II, III
- Excellent environmental sealing
- Range of weight indicators and printers



Model	Max cap kg	Readability kg	Carriage Bar Spacing mm	Carriage Class
WT25	1500 / 2500	1 / 2	406	(16") II
WT45	2500 / 4000	2 / 5	508	(20") III

LiftWeigh has undergone extensive shock and impact load testing (in accordance with ASTM D642) at an international notified test house. Tests show that the weighing units can withstand a head on impact of more than 10 times weighing capacity without any adverse affects on performance.



**LiftWeigh™**

**Società Cooperativa Bilanciai Campogalliano**  
41011 Campogalliano (MO) Italy - Via S. Ferrari, 16  
Tel. 059 / 89.36.11 - Fax 059 / 52.70.79  
**Servizio Assistenza Clienti** - Tel. 059 / 89.36.12 - Fax 059 / 52.72.94  
[www.coopbilanciai.it](http://www.coopbilanciai.it) - [cb@coopbilanciai.it](mailto:cb@coopbilanciai.it)



**Società Cooperativa Bilanciai Campogalliano** - 41011 Campogalliano (MO) Italy - Via S. Ferrari, 16  
Tel. +39 059 / 89.36.11 - Fax +39 059 / 52.70.79 - [www.coopbilanciai.it](http://www.coopbilanciai.it) - [cb@coopbilanciai.it](mailto:cb@coopbilanciai.it)  
**AFTER-SALES CUSTOMER SERVICES** Tel. 059 / 89.36.12 - Fax 059 / 52.72.94

Agent/Dealer